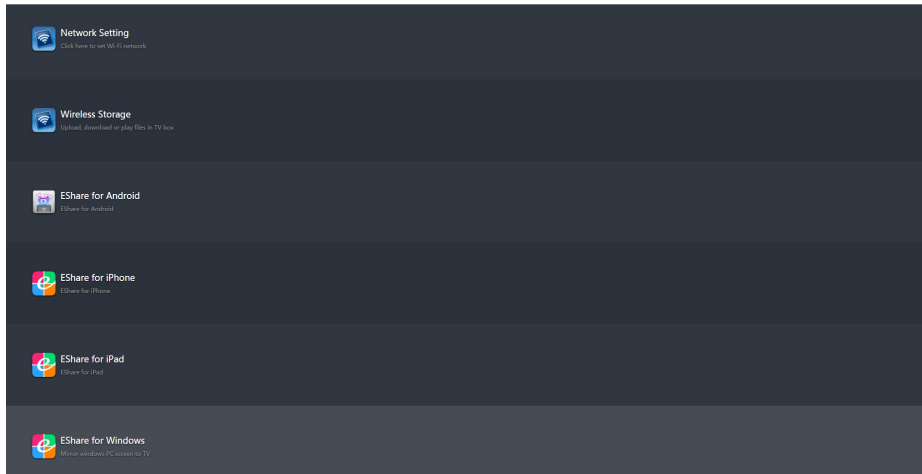
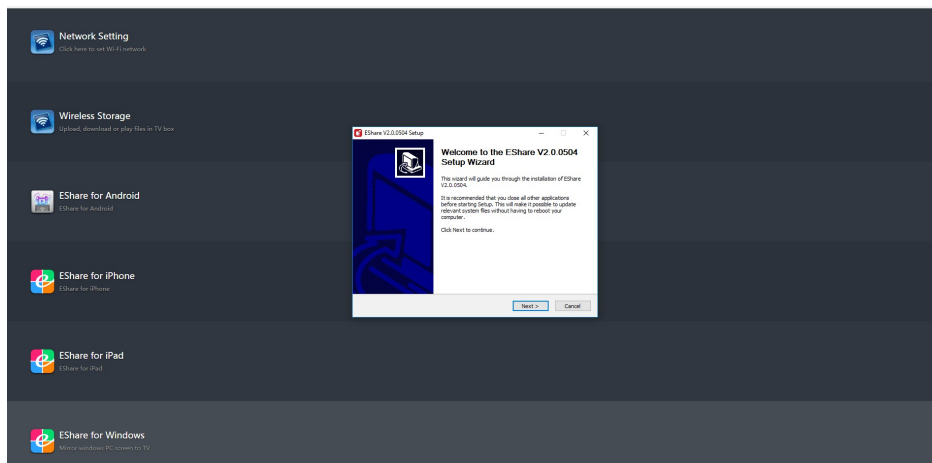


## How to mirror your windows PC to the SmartVU2

1. Open the Eshare application on the smartvu2 device by selecting Eshare from the list of installed applications.
2. Once Application has opened follow the 3 steps on screen to ge the screen below on your windows PC (this screen will show in the browser after entering the IP address on screen in the Eshare App).



3. Select Eshare for Windows and it will download the installer.
4. Once the installer has downloaded Run on your computer and follow the pompts in the installer.



5. Once installed the installer will open the Eshare application on your computer, select your Eshare-XXXX from the list and hit "Start"

